

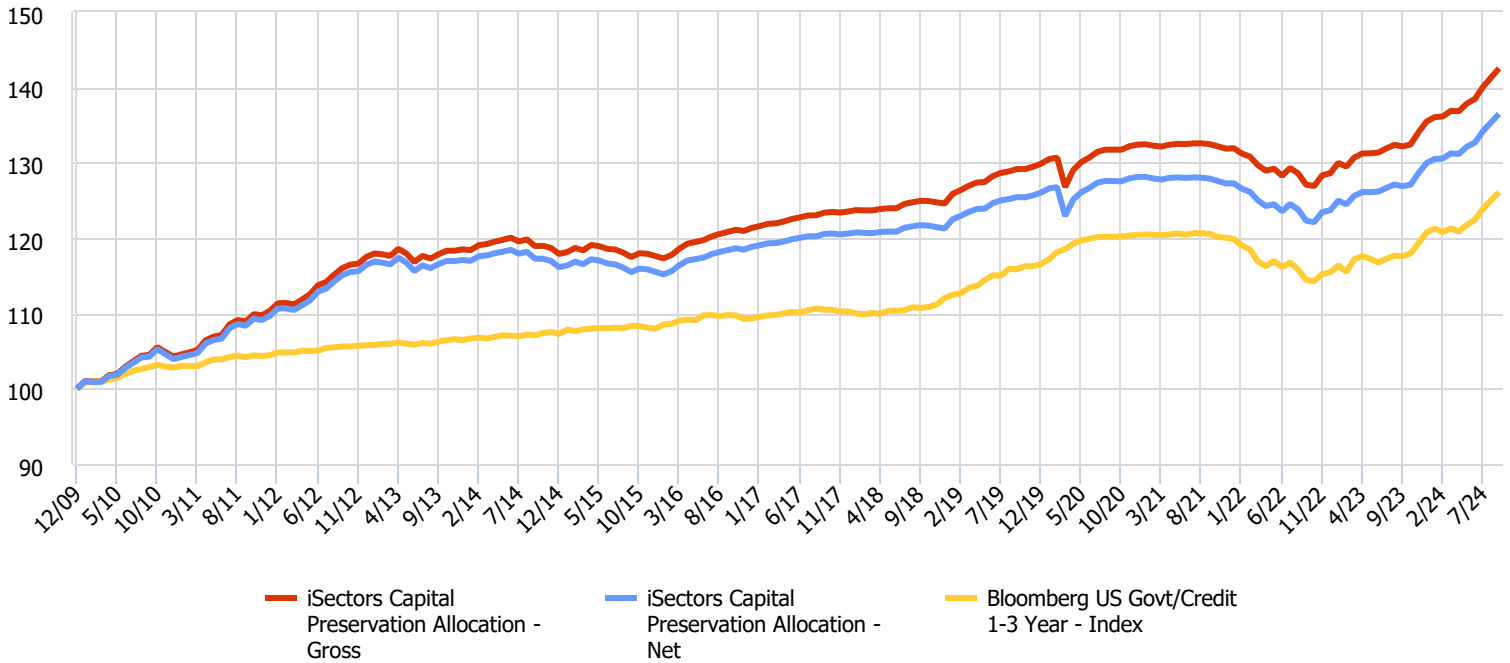


iSectors® Capital Preservation Allocation

9/2024

The iSectors® Capital Preservation Allocation is a strategic model that seeks principal stability over a 2-3 year period by assembling a portfolio of ETFs that collectively offer relatively low volatility. Nominal portfolio yield is a secondary goal of the model. The model primarily targets ETFs holding short-term, investment grade fixed income securities. A lesser portion of the portfolio may hold ETFs of short-term international or high yield securities. The model seeks to maintain an average investment grade rating for the entire portfolio as well as keeping portfolio duration to approximately 3 years or less.

Growth of \$100 Investment



Investor Type:	Conservative	Portfolio Inception:	1/1/2010
Benchmark 1:	Bloomberg 1-3 Year Government/Credit Index	Maximum Strategist Fee:	0.30%
Morningstar ID:	F00000GWNE	Estimated Net Underlying Vehicle Costs:	0.13%
Availability:	Separately & Unified Managed Account		

Product Name	RM	Returns MRQ	Returns 1 Year	Returns 3 Years	Returns 5 Years	Returns 10 Years
iSectors Capital Preservation Allocation	Gross	2.94	7.84	2.47	1.99	1.82
iSectors Capital Preservation Allocation	Net	2.88	7.58	2.19	1.70	1.53
Bloomberg US Govt/Credit 1-3 Year	Index	2.96	7.19	1.50	1.70	1.64

Risk Stats: Since Inception	iSectors Capital Preservation Allocation	iSectors Capital Preservation Allocation	Bloomberg US Govt/Credit 1-3 Year
RM	Gross	Net	Index
Returns	2.43	2.13	1.58
Cumulative Returns	42.51	36.47	26.05
Correlation to BM1	0.58	0.58	1.00
Annualized Alpha: BM1	1.16	0.87	0.00
Sharpe Ratio	0.71	0.54	0.33
Sortino Ratio	1.08	0.80	0.48
Standard Deviation	1.81	1.81	1.31
Max Drawdown	4.27	4.70	5.27

Performance and data in this illustration are presented net of underlying vehicle costs and iSectors' management fee. Presentation not complete without more detailed fee information and other disclosures located on the reverse side.

Past performance is not necessarily indicative of future results.

Not Guaranteed. Not Insured. May Lose Value.

Portfolio Characteristics	Current Target Allocations	
Management Style: Strategic Passive	Short Term Government Bonds	34.3%
Leverage: No Leverage	Invest Grade Bonds	29.4%
Portfolio Type: Satellite	Short Term TIPS	14.7%
Geographic Universe: Primarily Domestic	High Yield Bonds	9.8%
Securities Universe: ETFs	Mortgage Backed Bonds	4.9%
Current # of Securities: 9	Floating Rate Notes	4.9%
30-Day SEC Yield: 4.25%	Cash	2.0%
12-Month Yield: 4.17%		
Effective Duration: 1.79 Years		
Yield to Maturity: 4.37%		
Average Credit Rating: A+		

Contact Info

Scott Jones: Director of Business Development	John Koch, CFA: Senior Investment Analyst
Direct: 800.869.5184	Direct: 800.869.5198

5485 W. Grande Market Drive Suite D Appleton WI 54913 **Website:** iSectors.com

Disclosure

iSectors[®] is a suite of proprietary asset allocation models and services. iSectors[®], LLC is an affiliate of Sumnicht & Associates, LLC (Sumnicht) and, as such, iSectors[®] and Sumnicht share certain employee services. iSectors[®] became registered as an investment advisor in August 2008. iSectors[®] is a registered trademark of Sumnicht Holdings, LLC.

The contents of this presentation are for informational purposes only. Content should not be construed as financial or investment advice on any subject matter. This is neither an offer nor a solicitation to buy and/or sell securities. Information pertaining to iSectors[®] operations, services, and fees is set forth in its current disclosure statement (Form ADV, Part 2 Brochure), a copy of which is available upon request.

iSectors[®] asset allocation models are not guaranteed and involve risk of loss. At any given point in time, the value of iSectors[®] asset allocation model portfolios may be worth more or less than the amount invested. Different types of investments and/or investment strategies involve varying levels of risk, and there can be no assurance that any specific investment or investment strategy (including the investments and/or investment strategies devised or undertaken by iSectors[®]) will be either suitable or profitable. Financial professionals are responsible for evaluating investments risks independently and for exercising independent judgement in determining whether investments are appropriate for their clients.

Past performance may not be indicative of future results. Therefore, no current or prospective investor should assume that future performance will be profitable, or equal either the performance results reflected or any corresponding historical index. Asset allocation and diversification concepts do not ensure a profit nor protect against loss in a declining market.

The historical benchmark index performance results are provided exclusively for comparison purposes to assist an advisor in determining whether the performance of a specific investment meets their respective client's investment objective(s). It should not be assumed that any account holdings will correspond directly to any comparative index. Index performance results do not reflect the impact of taxes. Indexes are not available for direct investment. Index performance results are compiled directly by each respective index and obtained by iSectors[®] from reliable sources. Index performance has not been independently verified by iSectors[®]. iSectors[®] models are based primarily on index ETFs that can neither outperform nor underperform their benchmark index. We provide benchmark indexes that are well known for comparison purposes only.

Net Performance results reflect the deduction of the iSectors[®] Strategist Fee. Actual client results will be lower based on fees for platform, advisory, transaction, and custodial services that are not set at (and may not be known at) the iSectors[®] level. Additionally, if your account (through your adviser or otherwise) does not fully follow a specific iSectors[®] model, performance would also, of course, further differ. Please consult your financial adviser for fees applicable to your account. ERISA (group retirement) accounts are subject to additional recordkeeping and/or administrative fees.

Sumnicht & Associates / iSectors[®] (the "Firm") claims compliance with the Global Investment Performance Standards (GIPS[®]). GIPS[®] is a registered trademark of CFA Institute. CFA Institute does not endorse or promote this organization, nor does it warrant accuracy or quality of the content contained herein. To obtain a GIPS[®] composite report and/or the Firm's list of composite descriptions contact John Koch, Senior Investment Analyst, at (920) 257-5170.

You should not assume that any discussion or information contained in this presentation serves as the receipt of, or as a substitute for, personalized investment advice from an investment professional.

This presentation has not been reviewed, submitted for review before, or otherwise approved by FINRA, the SEC or any state or provincial securities regulators.